



Challenges

UNEMPLOYMENT is on the rise around the world



Roughly **HALF OF THE WORLD** population still lives on **\$2 PER DAY**

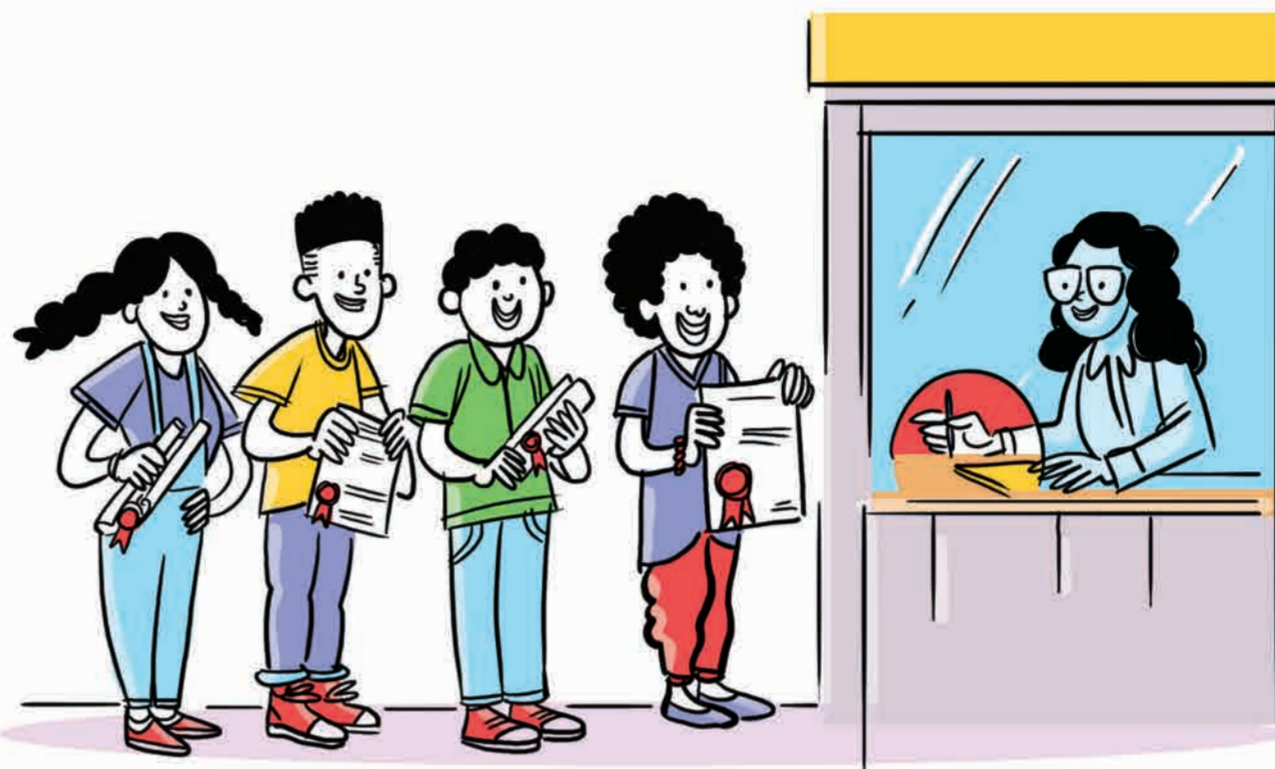


Some economic activities directly or indirectly **HARM THE ENVIRONMENT**



Solutions

PROVIDE EMPLOYMENT OPPORTUNITIES AND DECENT WORK for women and men to eradicate poverty



CREATE GREEN JOBS to provide work for the 470 million who will be entering the labour market by 2030



PROMOTE GREEN GROWTH AND JOBS contributing to restoring and protecting the environment and natural resources

